

| MAP LABEL | AIDS TO NAVIGATION | PLANE COORDINATES |        | LATITUDE     | LONGITUDE    |
|-----------|--------------------|-------------------|--------|--------------|--------------|
|           |                    | X                 | Y      |              |              |
| G-53*     | DBN-53 (04/22)     | 962495            | 772019 | 26°27'18.39" | 80°03'52.78" |

US Army Corps of Engineers  
Jacksonville District

SAFETY ON THIS JOB  
DEPENDS ON YOU

|  |  |  |  |  |
|--|--|--|--|--|
|  |  |  |  |  |
|  |  |  |  |  |
|  |  |  |  |  |
|  |  |  |  |  |
|  |  |  |  |  |
|  |  |  |  |  |
|  |  |  |  |  |
|  |  |  |  |  |
|  |  |  |  |  |

DEPARTMENT OF THE ARMY  
JACKSONVILLE DISTRICT, CORPS OF ENGINEERS  
JACKSONVILLE, FLORIDA

|   |  |
|---|--|
| <p>Designed by: WRM<br/>Checked by: WRM<br/>Drawn by: WRM<br/>File No: W91255-00-00-0004<br/>Date: APR 2022</p> | <p>XXXXXXXXXXXXXXXXXXXX<br/>22-010A-000010.DGN<br/>22-010A-000104.DGN<br/>WAC-SAC002.DGN<br/>22-010A-000104.DGN<br/>22-010A-000104.DGN</p> |
|---|--|

INTRACOASTAL WATERWAY  
JACKSONVILLE TO MIAMI, FLORIDA  
PALM BEACH COUNTY  
**HYDROGRAPHIC EXAM SURVEY FY22**  
**10-FOOT PROJECT**  
STA. 1+00 CUT P-64 THRU STA. 8+00 CUT P-65  
**PLAN**

Scale: AS SHOWN

Drawing no.  
**61**

SHEET 61 OF 76

GRAPHIC SCALE  
100' 0 100' 200'

NOTES:  
1. REFER TO SURVEY NO. 22-010.  
2. SEE SHEET NO. 1 FOR SURVEY NOTES.



US Army Corps  
of Engineers  
Jacksonville District

SAFETY ON THIS JOB  
DEPENDS ON YOU

| No. | Symbol | Zone |
|-----|--------|------|
|     |        |      |
|     |        |      |
|     |        |      |
|     |        |      |
|     |        |      |
|     |        |      |
|     |        |      |
|     |        |      |
|     |        |      |
|     |        |      |
|     |        |      |
|     |        |      |
|     |        |      |
|     |        |      |
|     |        |      |
|     |        |      |
|     |        |      |
|     |        |      |
|     |        |      |
|     |        |      |
|     |        |      |
|     |        |      |
|     |        |      |
|     |        |      |
|     |        |      |
|     |        |      |
|     |        |      |
|     |        |      |

DEPARTMENT OF THE ARMY  
JACKSONVILLE DISTRICT, CORPS OF ENGINEERS  
JACKSONVILLE, FLORIDA

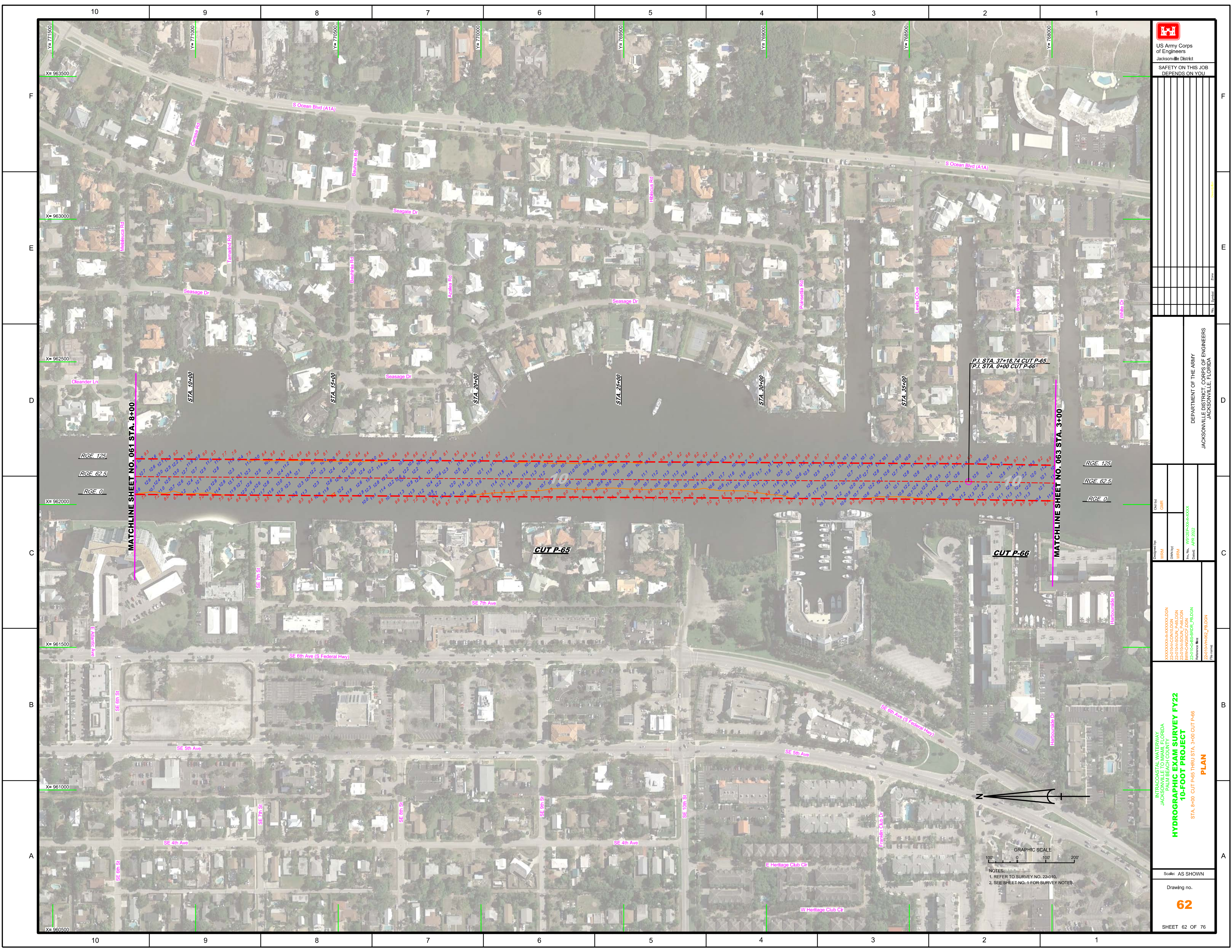
RGE. 125  
RGE. 62.5  
RGE. 0

| Drawn by | Checked by |
|----------|------------|
| WRM      | GHR        |
| WRM      | WRM        |
| WRM      | WRM        |
| WRM      | WRM        |
| WRM      | WRM        |

XXXXXXXXXXXXXXXXXXXX.DGN  
22-010-00-00-0000-00.DGN  
22-010-00-00-00-00-00.DGN  
00-00-00-00-00-00-00.DGN  
00-00-00-00-00-00-00.DGN  
00-00-00-00-00-00-00.DGN

INTRACOASTAL WATERWAY  
JACKSONVILLE TO MIAMI, FLORIDA  
PALM BEACH COUNTY  
**HYDROGRAPHIC EXAM SURVEY FY22  
10-FOOT PROJECT**  
PLAN  
STA. 8+00 CUT P-65 THRU STA. 3+00 CUT P-66

Scale: AS SHOWN  
Drawing no.  
**62**  
SHEET 62 OF 76

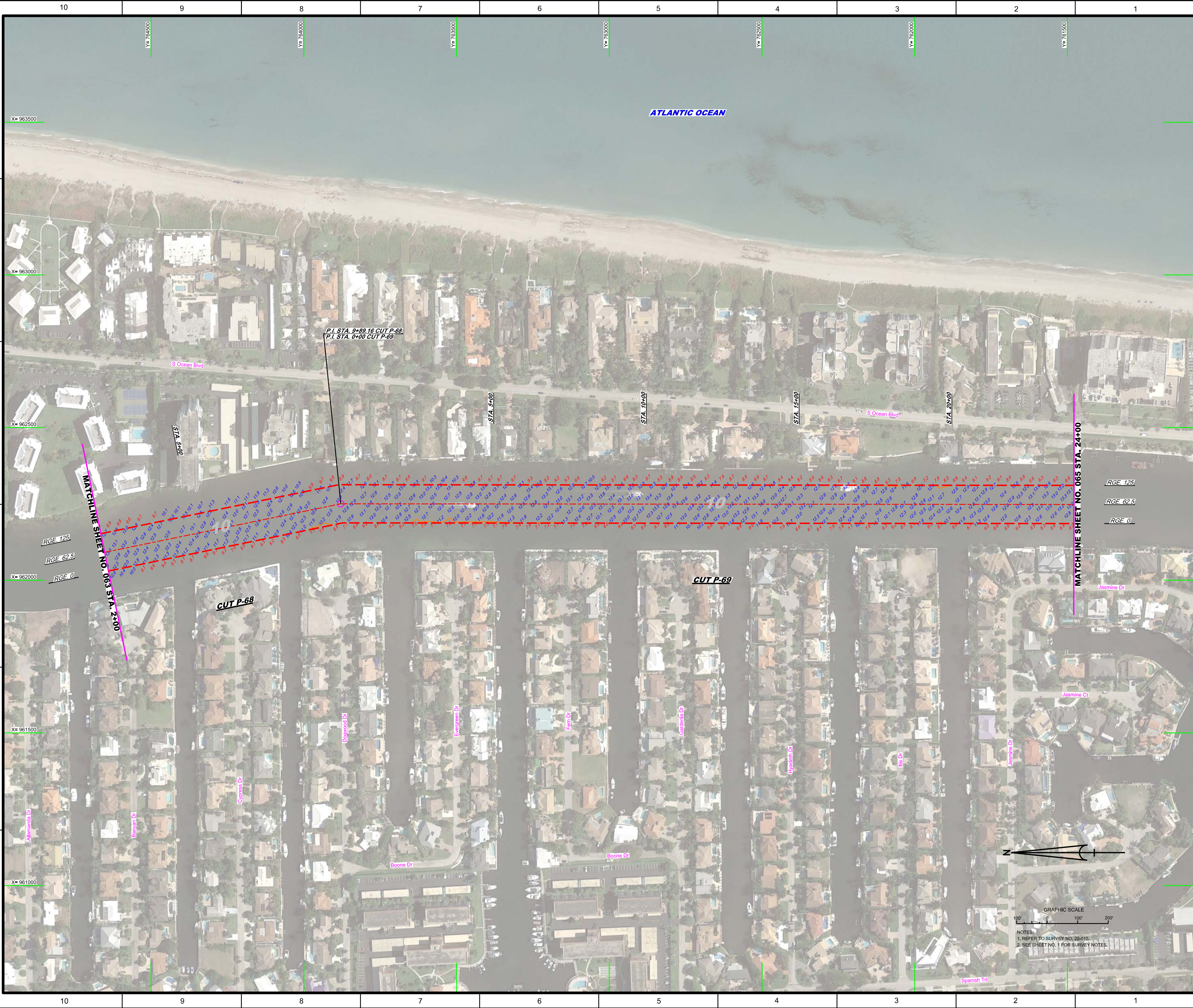


GRAPHIC SCALE  
0 100 200  
NOTES:  
1. REFER TO SURVEY NO. 22-010,  
2. SEE SHEET NO. 1 FOR SURVEY NOTES.

Scale: AS SHOWN  
Drawing no.  
**62**  
SHEET 62 OF 76



|  |                         |
|--|-------------------------|
| <p>US Army Corps of Engineers<br/>Jacksonville District</p>  |                         |
| <p>SAFETY ON THIS JOB<br/>DEPENDS ON YOU</p>   |                         |
| <p>DEPARTMENT OF THE ARMY<br/>JACKSONVILLE DISTRICT, CORPS OF ENGINEERS<br/>JACKSONVILLE, FLORIDA</p>  |                         |
| <p>Drawn by: GHR</p>   | <p>Checked by: WRM</p>  |
| <p>Designed by: WRM</p>  | <p>Reviewed by: WRM</p> |
| <p>File No: W12255-000-0001</p>  | <p>Date: APR 2022</p>   |
| <p>XXXXXXXXXXXXXXXXXXXX<br/>22-010A-SOIL_P46.DGN<br/>22-010A-SOIL_P47.DGN<br/>WAC-CANACE.DGN<br/>22-010C-SB-SRIR_P6.DGN<br/>Reference files:<br/>22-010A-HRCL_P6.DGN</p>   |                         |
| <p>INTRACOASTAL WATERWAY<br/>JACKSONVILLE TO MIAMI, FLORIDA<br/>PALM BEACH COUNTY<br/><b>HYDROGRAPHIC EXAM SURVEY FY22</b><br/><b>10-FOOT PROJECT</b><br/>STA. 3+00 CUT P-66 THRU STA. 2+00 CUT P-68<br/><b>PLAN</b></p> |                         |
| <p>Scale: AS SHOWN</p>   |                         |
| <p>Drawing no.<br/><b>63</b></p>   |                         |
| <p>SHEET 63 OF 76</p>  |                         |

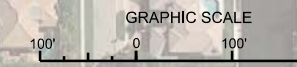


|   |  |
|---|--|
| <p>US Army Corps of Engineers<br/>Jacksonville District</p>   |  |
| <p>SAFETY ON THIS JOB<br/>DEPENDS ON YOU</p>  |  |
| <p>DEPARTMENT OF THE ARMY<br/>JACKSONVILLE DISTRICT, CORPS OF ENGINEERS<br/>JACKSONVILLE, FLORIDA</p>   |  |
| <p>Drawn by: WRM</p>  | <p>Checked by: GHR</p>   |
| <p>Designated by: WRM</p>   | <p>Design Date: APR 2022</p>   |
| <p>XXXXXXXXXXXXXXXXXXXX<br/>22-010A-CON10.DGN<br/>22-010A-SOIL_P-68.DGN<br/>22-010A-SURF.DGN<br/>22-010A-CB-SRIRL_P-68.DGN<br/>22-010A-HRKL_P-68.DGN</p>  | <p>XXXXXXXXXXXXXXXXXXXX<br/>22-010A-CON10.DGN<br/>22-010A-SOIL_P-68.DGN<br/>22-010A-SURF.DGN<br/>22-010A-CB-SRIRL_P-68.DGN<br/>22-010A-HRKL_P-68.DGN</p> |
| <p>INTRACOASTAL WATERWAY<br/>JACKSONVILLE TO MIAMI, FLORIDA<br/>PALM BEACH COUNTY<br/><b>HYDROGRAPHIC EXAM SURVEY FY22</b><br/><b>10-FOOT PROJECT</b><br/>STA. 2+00 CUT P-68 THRU STA. 24+00 CUT P-69<br/><b>PLAN</b></p> |  |
| <p>Scale: AS SHOWN</p>  |  |
| <p>Drawing no.<br/><b>64</b></p>  |  |
| <p>SHEET 64 OF 76</p>   |  |



|  |                                    |
|--|------------------------------------|
| <p>US Army Corps of Engineers<br/>Jacksonville District</p>  |                                    |
| <p>SAFETY ON THIS JOB<br/>DEPENDS ON YOU</p>   |                                    |
| <p>DEPARTMENT OF THE ARMY<br/>JACKSONVILLE DISTRICT, CORPS OF ENGINEERS<br/>JACKSONVILLE, FLORIDA</p>  |                                    |
| <p>Checked By: GHR</p>   | <p>Designed By: WRM</p>            |
| <p>Drawn By: WRM</p>   | <p>File No: W91255-00-000-0000</p> |
| <p>Project No: W91255-00-000-0000</p>  | <p>Date: APR 2022</p>              |
| <p>XXXXXXXXXXXXXXXXXXXX<br/>         22-010A-SOUL_P-69.DGN<br/>         22-010A-SOUL_P-70.DGN<br/>         W91255-00-000-0000<br/>         W91255-00-000-0000<br/>         22-010A-SOUL_P-69.DGN<br/>         22-010A-SOUL_P-70.DGN</p>                  |                                    |
| <p>INTRACOASTAL WATERWAY<br/>         JACKSONVILLE TO MIAMI, FLORIDA<br/>         PALM BEACH COUNTY<br/> <b>HYDROGRAPHIC EXAM SURVEY FY22</b><br/> <b>10-FOOT PROJECT</b><br/>         STA. 24+00 CUT P-69 THRU STA. 13+00 CUT P-71<br/> <b>PLAN</b></p> |                                    |
| <p>Scale: AS SHOWN</p>   |                                    |
| <p>Drawing no. <b>65</b></p>   |                                    |
| <p>SHEET 65 OF 76</p>  |                                    |

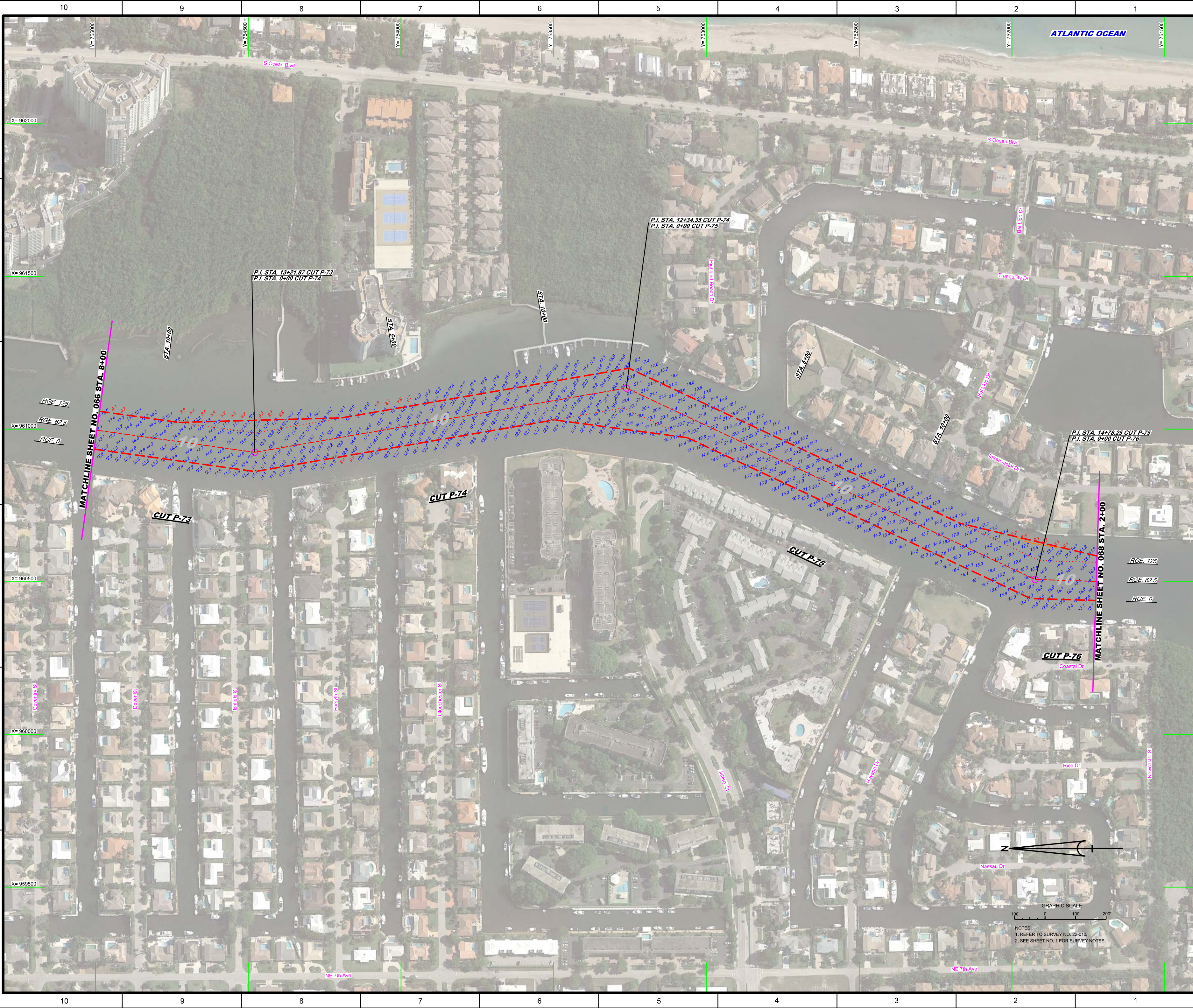
NOTES:  
 1. REFER TO SURVEY NO. 22-010  
 2. SEE SHEET NO. 1 FOR SURVEY NOTES.





|   |   |
|---|---|
| <p>US Army Corps of Engineers<br/>Jacksonville District</p>   |   |
| <p>SAFETY ON THIS JOB<br/>DEPENDS ON YOU</p>  |   |
| <p>DEPARTMENT OF THE ARMY<br/>JACKSONVILLE DISTRICT, CORPS OF ENGINEERS<br/>JACKSONVILLE, FLORIDA</p>                     |   |
| <p>Checked By: GHR</p>  | <p>Designed By: WRM</p>                     |
| <p>Drawn By: WRM</p>  | <p>Project No: 22-010-0000-0000-0000</p>    |
| <p>Date: APR 2022</p>   | <p>Reference Map: 22-010-0000-0000-0000</p> |
| <p><b>INTRACOASTAL WATERWAY<br/>JACKSONVILLE TO MIAMI, FLORIDA<br/>PALM BEACH COUNTY<br/>10-FOOT PROJECT<br/>PLAN</b></p> |   |
| <p>STA. 13+00 CUT P-71 THRU STA. 8+00 CUT P-73</p>  |   |
| <p>Scale: AS SHOWN</p>  |   |
| <p>Drawing no. <b>66</b></p>  |   |
| <p>SHEET 66 OF 76</p>   |   |

NOTES:  
1. REFER TO SURVEY NO. 22-010.  
2. SEE SHEET NO. 1 FOR SURVEY NOTES.



|  |                                  |
|--|----------------------------------|
| <p>US Army Corps of Engineers<br/>Jacksonville District</p>  |                                  |
| <p>SAFETY ON THIS JOB<br/>DEPENDS ON YOU</p>   |                                  |
| <p>DEPARTMENT OF THE ARMY<br/>JACKSONVILLE DISTRICT, CORPS OF ENGINEERS<br/>JACKSONVILLE, FLORIDA</p>  |                                  |
| <p>Checked By: GHR</p>   | <p>Drawn By: WRM</p>             |
| <p>Designed By: WRM</p>  | <p>Field No: W91255-000-0000</p> |
| <p>Scale: AS SHOWN</p>   | <p>Drawing no. <b>67</b></p>     |
| <p>INTRACOASTAL WATERWAY<br/>JACKSONVILLE TO MIAMI, FLORIDA<br/>PALM BEACH COUNTY<br/><b>HYDROGRAPHIC EXAM SURVEY FY22</b><br/><b>10-FOOT PROJECT</b><br/>STA. 8+00 CUT P-73 THRU STA. 2+00 CUT P-76<br/><b>PLAN</b></p> |                                  |
| <p>SHEET 67 OF 76</p>  |                                  |

NOTES:  
1. REFER TO SURVEY NO. 22-010.  
2. SEE SHEET NO. 1 FOR SURVEY NOTES.



GRAPHIC SCALE  
 100' 0 100' 200'

NOTES:  
 1. REFER TO SURVEY NO. 22-010.  
 2. SEE SHEET NO. 1 FOR SURVEY NOTES.

**US Army Corps of Engineers**  
Jacksonville District  
SAFETY ON THIS JOB DEPENDS ON YOU

---

|  |   |                 |
|--|---|-----------------|
| DEPARTMENT OF THE ARMY<br>JACKSONVILLE DISTRICT, CORPS OF ENGINEERS<br>JACKSONVILLE, FLORIDA | Designated By: WRM<br>Drawn By: WRM<br>File No.: W93255-8-9-A-001<br>Date: APR 2022   | Checked By: GHR |
|  | <b>INTRACOASTAL WATERWAY</b><br>JACKSONVILLE TO MIAMI, FLORIDA<br><b>FALLI BEACH COUNTY 10-FOOT PROJECT</b><br>STA. 2+00 CUT P-76 THRU STA. 17+00 CUT P-77<br><b>PLAN</b> |                 |
|  | Scale: AS SHOWN<br>Drawing no. <b>68</b><br>SHEET 68 OF 76  |                 |





| MAP LABEL | AIDS TO NAVIGATION | PLANE COORDINATES |         | LATITUDE     | LONGITUDE    |
|-----------|--------------------|-------------------|---------|--------------|--------------|
|           |                    | X                 | Y       |              |              |
| R'56"     | LT-56 (04/22)      | 959,559           | 742,819 | 26°22'27.42" | 80°04'24.09" |
| G'57"     | DBN-57 (04/22)     | 959,806           | 742,349 | 26°22'22.74" | 80°04'21.41" |
| INFO SIGN | SIGN (04/22)       | 959,777           | 742,796 | 26°22'21.71" | 80°04'21.69" |

**US Army Corps of Engineers**  
Jacksonville District

SAFETY ON THIS JOB DEPENDS ON YOU

DEPARTMENT OF THE ARMY  
JACKSONVILLE DISTRICT, CORPS OF ENGINEERS  
JACKSONVILLE, FLORIDA

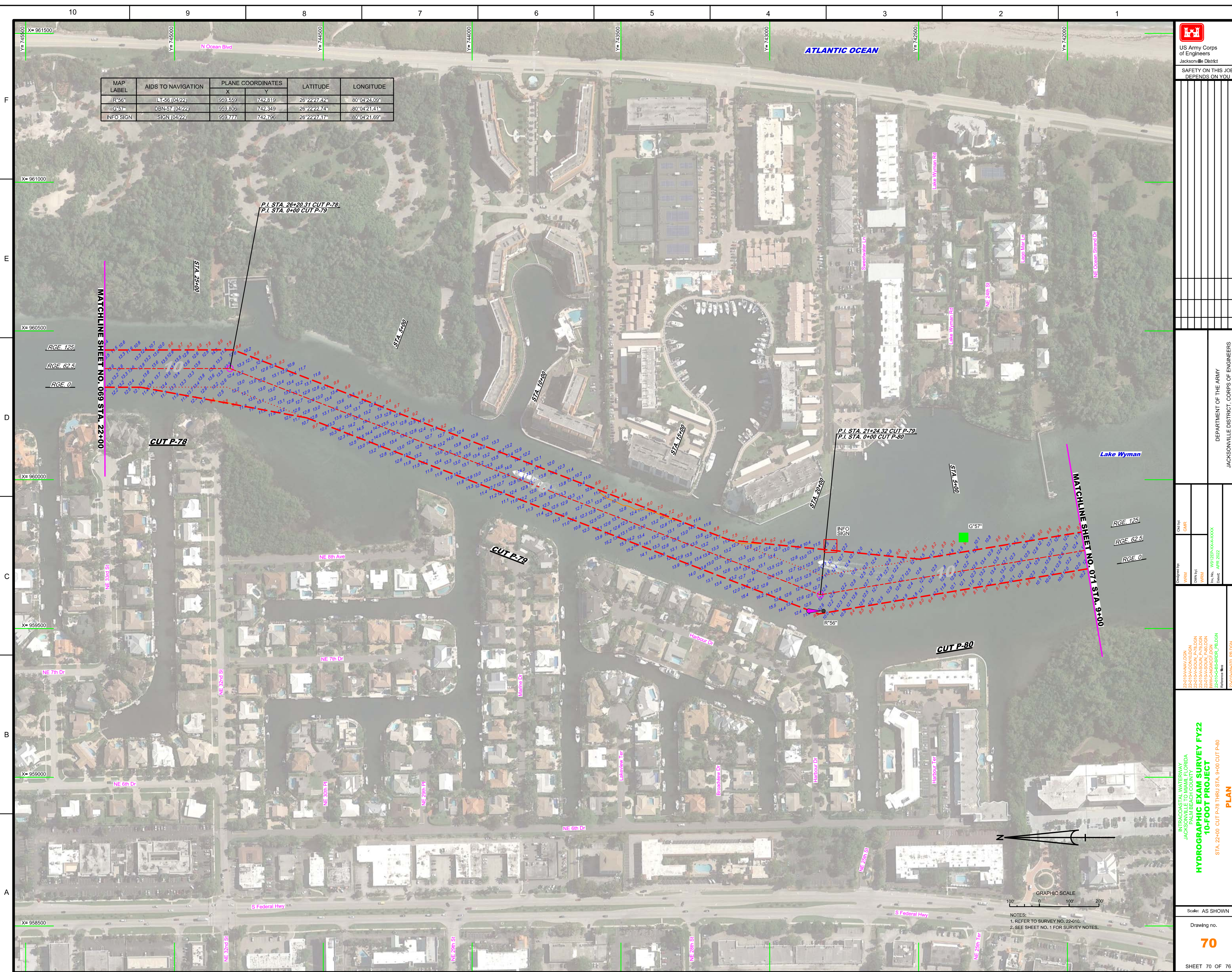
Drawn by: **WRM**  
Checked by: **WRM**  
Date: **APR 2022**

INTRACOASTAL WATERWAY  
JACKSONVILLE TO MIAMI, FLORIDA  
PALM BEACH COUNTY  
**HYDROGRAPHIC EXAM SURVEY FY22**  
**10-FOOT PROJECT**  
STA. 22+00 CUT P-78 THRU STA. 9+00 CUT P-80  
**PLAN**

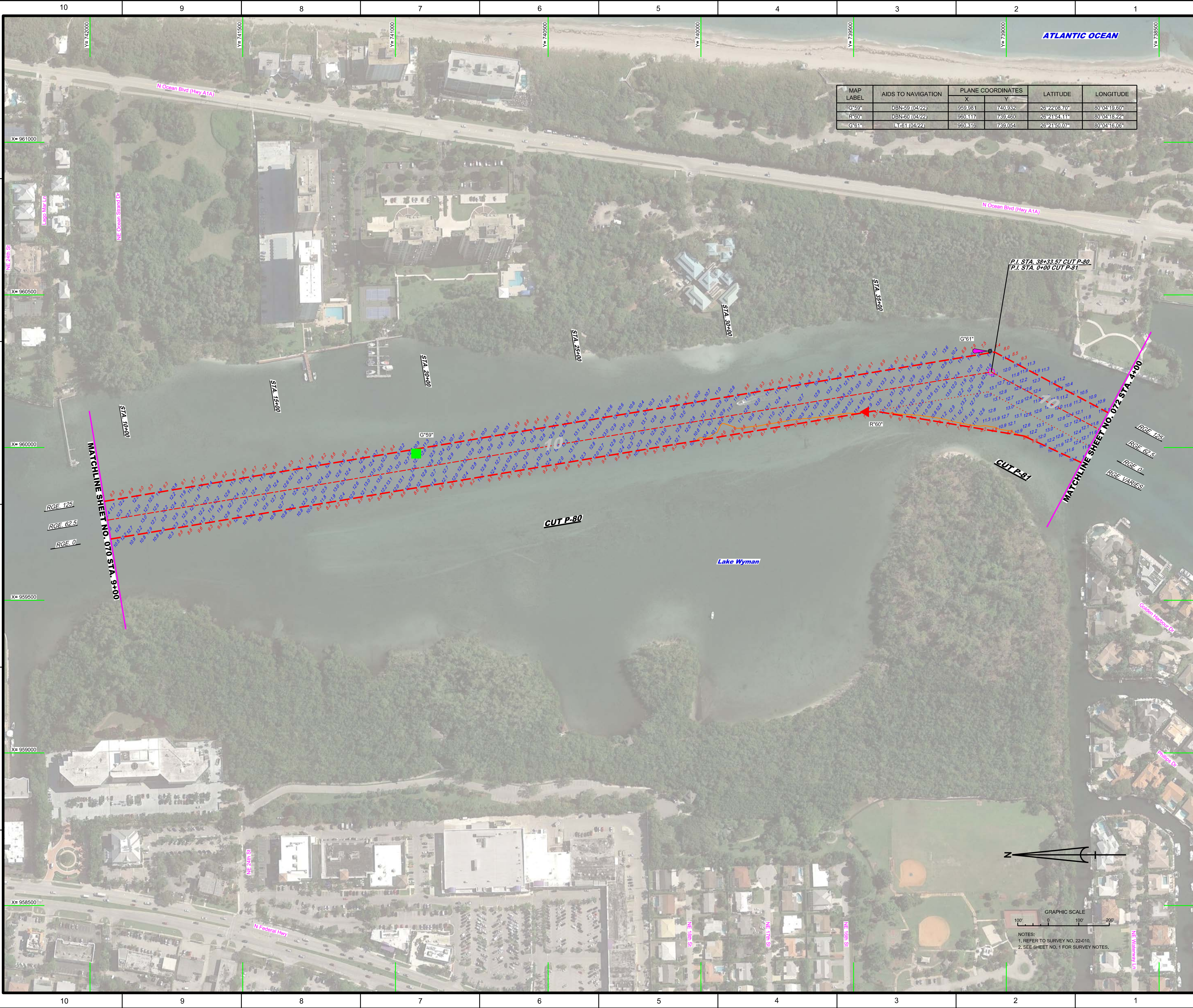
Scale: AS SHOWN

Drawing no. **70**


SHEET 70 OF 76



NOTES:  
1. REFER TO SURVEY NO. 22-410.  
2. SEE SHEET NO. 1 FOR SURVEY NOTES.



| MAP LABEL | AIDS TO NAVIGATION | PLANE COORDINATES |         | LATITUDE     | LONGITUDE    |
|-----------|--------------------|-------------------|---------|--------------|--------------|
|           |                    | X                 | Y       |              |              |
| G-59      | DBN-59 (04/22)     | 959,881           | 740,932 | 28°22'08.70" | 80°04'18.60" |
| R-60      | DBN-60 (04/22)     | 960,117           | 739,460 | 28°21'54.11" | 80°04'18.22" |
| G-61      | LT-61 (04/22)      | 960,316           | 739,054 | 28°21'50.07" | 80°04'16.06" |



US Army Corps of Engineers  
Jacksonville District  
SAFETY ON THIS JOB  
DEPENDS ON YOU

---

Designed by: WRM  
Drawn by: WRM  
Checked by: WRM  
Scale: AS SHOWN  
Date: APR 2022

Drawn by: WRM  
Checked by: WRM  
Date: APR 2022

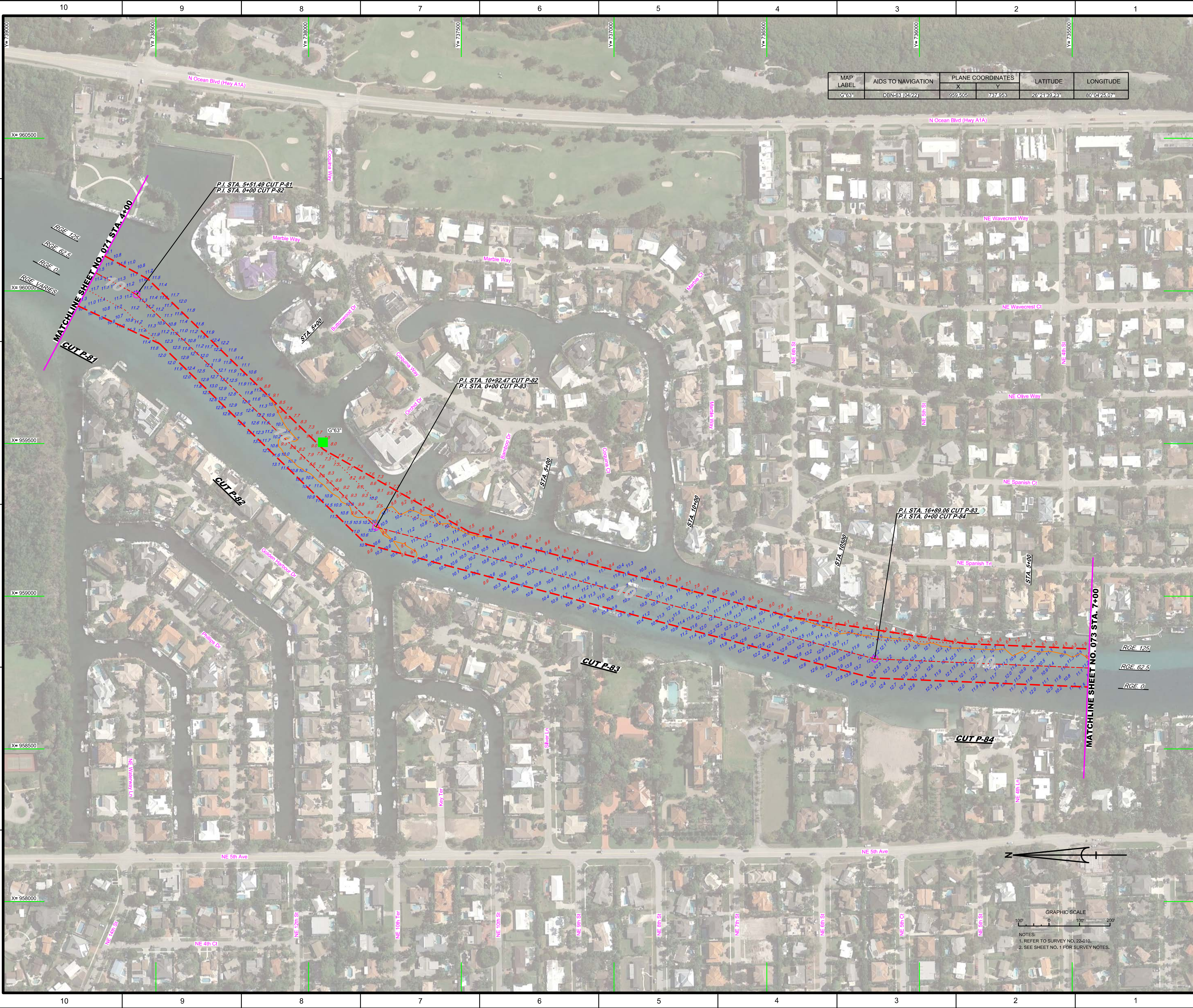
---

**INTRACOASTAL WATERWAY**  
**JACKSONVILLE TO MIAMI, FLORIDA**  
**FALM BEACH COUNTY**  
**HYDROGRAPHIC EXAM SURVEY FY22**  
**10-FOOT PROJECT**  
 STA. 0+00 CUT P-80 THRU STA. 4+00 CUT P-81  
**PLAN**


---

Scale: AS SHOWN  
Drawing no.: **71**  
SHEET 71 OF 76

Department of the Army  
Jacksonville District, Corps of Engineers  
Jacksonville, Florida



| MAP LABEL | AIDS TO NAVIGATION | PLANE COORDINATES |         | LATITUDE       | LONGITUDE      |
|-----------|--------------------|-------------------|---------|----------------|----------------|
|           |                    | X                 | Y       |                |                |
| G-63*     | DBN-63 (04/22)     | 959,505           | 737,953 | 26° 21' 39.23" | 80° 04' 25.07" |



US Army Corps of Engineers  
Jacksonville District

SAFETY ON THIS JOB  
DEPENDS ON YOU

---

DEPARTMENT OF THE ARMY  
JACKSONVILLE DISTRICT, CORPS OF ENGINEERS  
JACKSONVILLE, FLORIDA

Checked By: GHR  
Designed By: WRM  
Drawn By: WRM  
In Charge: WRM  
Date: APR 2022

---

INTRACOASTAL WATERWAY  
JACKSONVILLE TO MIAMI, FLORIDA  
PALM BEACH COUNTY  
10-FOOT PROJECT  
STA. 4+00 CUT P-81 THRU STA. 7+00 CUT P-84  
PLAN

Scale: AS SHOWN  
Drawing No. **72**  
SHEET 72 OF 76

---

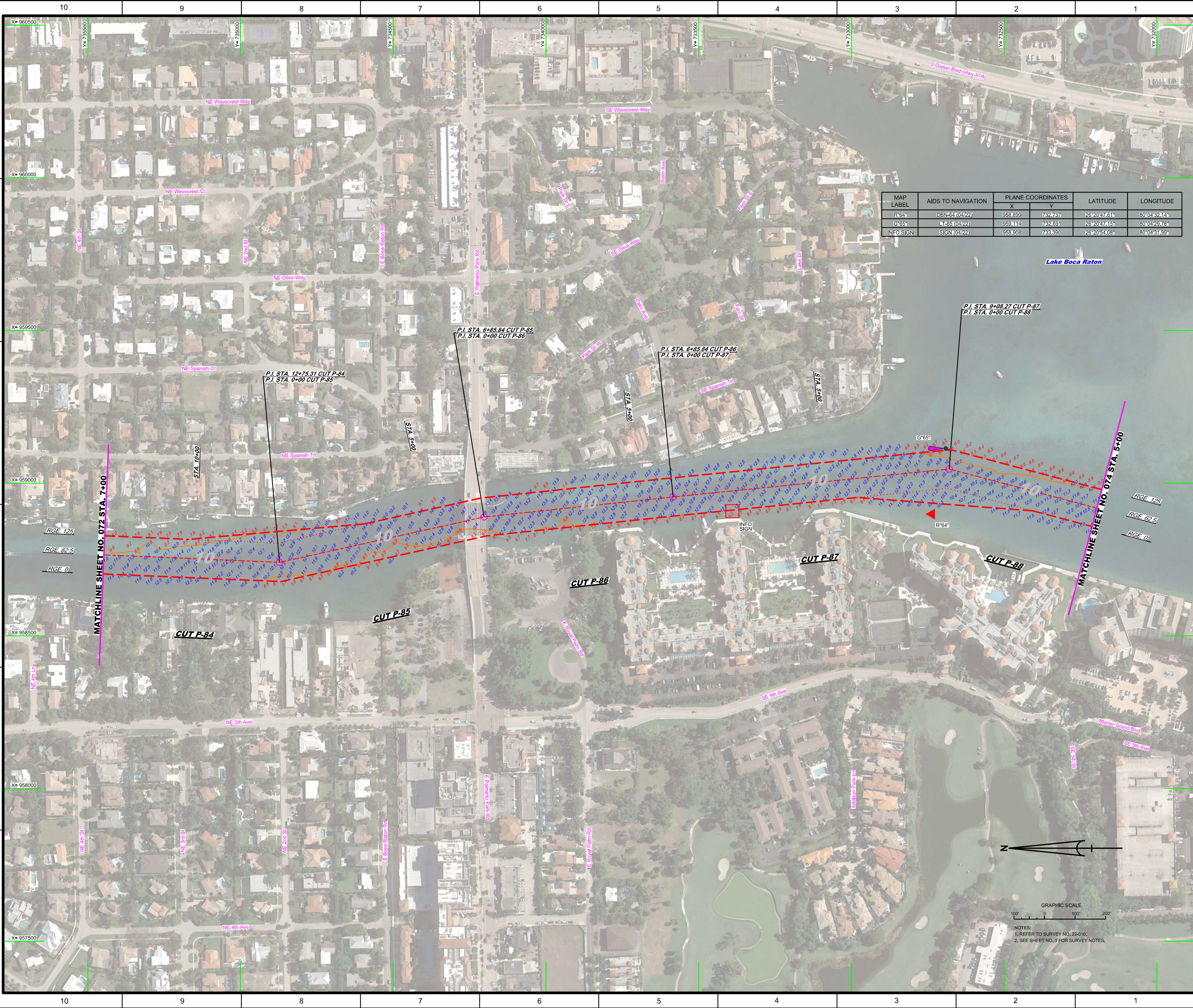
22-0104AV/DON  
22-0104AC/CON/DON  
22-0104AS/DON  
22-0104AS/DON  
22-0104AS/DON  
22-0104AS/DON  
22-0104AS/DON  
22-0104AS/DON  
22-0104AS/DON  
22-0104AS/DON

Reference Map: 22-0104H7Z\_P8.DGN  
File Name:


---

NOTES:  
1. REFER TO SURVEY NO. 22-010.  
2. SEE SHEET NO. 1 FOR SURVEY NOTES.

GRAPHIC SCALE  
100' 0 100' 200'



| MAP LABEL | AIDS TO NAVIGATION | PLANE COORDINATES |         | LATITUDE      | LONGITUDE     |
|-----------|--------------------|-------------------|---------|---------------|---------------|
|           |                    | X                 | Y       |               |               |
| R*64      | DBN-64 (04/22)     | 958,899           | 732,737 | 26° 20'47.61" | 80° 04'32.14" |
| G*65      | LT-65 (04/22)      | 959,114           | 732,691 | 26° 20'47.15" | 80° 04'29.78" |
| INFO SIGN | SIGN (04/22)       | 958,908           | 733,390 | 26° 20'54.08" | 80° 04'31.99" |



US Army Corps of Engineers  
Jacksonville District

**SAFETY ON THIS JOB DEPENDS ON YOU**

---

Designed by: WRM  
Checked by: WRM  
Date: APR 2022

Drawn by: WRM  
Checked by: WRM  
Date: APR 2022

DEPARTMENT OF THE ARMY  
JACKSONVILLE DISTRICT, CORPS OF ENGINEERS  
JACKSONVILLE, FLORIDA

---

22-010A-AV.DGN  
22-010A-CONV.DGN  
22-010A-SOUL\_P-84.DGN  
22-010A-SOUL\_P-85.DGN  
22-010A-SOUL\_P-86.DGN  
22-010A-SOUL\_P-87.DGN  
22-010A-SOUL\_P-88.DGN  
22-010A-H7L\_P.DGN

**HYDROGRAPHIC EXAM SURVEY FY22**  
**10-FOOT PROJECT**

STA. 7+00 CUT P-84 THRU STA. 5+00 CUT P-88

**PLAN**

---

Scale: AS SHOWN

Drawing no. **73**

SHEET 73 OF 76

NOTES:  
1. REFER TO SURVEY NO. 22-010.  
2. SEE SHEET NO. 1 FOR SURVEY NOTES.

| MAP LABEL | AIDS TO NAVIGATION | PLANE COORDINATES |         | LATITUDE     | LONGITUDE    |
|-----------|--------------------|-------------------|---------|--------------|--------------|
|           |                    | X                 | Y       |              |              |
| R*66      | DBN-66 (04/22)     | 958,540           | 730,935 | 26°20'23.80" | 80°04'38.23" |
| G*67      | LT-67 (04/22)      | 958,651           | 730,851 | 26°20'28.95" | 80°04'35.02" |
| INFO SIGN | SIGN (04/22)       | 958,362           | 729,823 | 26°20'18.80" | 80°04'38.27" |

**US Army Corps of Engineers**  
Jacksonville District

SAFETY ON THIS JOB  
DEPENDS ON YOU

---

DEPARTMENT OF THE ARMY  
JACKSONVILLE DISTRICT, CORPS OF ENGINEERS  
JACKSONVILLE, FLORIDA

Designed by: WRM  
Checked by: GHR

Drawn by: WRM  
Checked by: WRM

File No: W91255-00-00-0004  
Contract: APR 2022

22-010-AVAV-DGN  
22-010-AV-CON-DGN  
WAC-CANACE-DGN  
22-010-GS-BB-RROR\_FL-DGN  
Reference: 116  
22-010-AV-H7-L\_FL-DGN

INTRACOASTAL WATERWAY  
JACKSONVILLE TO MIAMI, FLORIDA  
PALM BEACH COUNTY

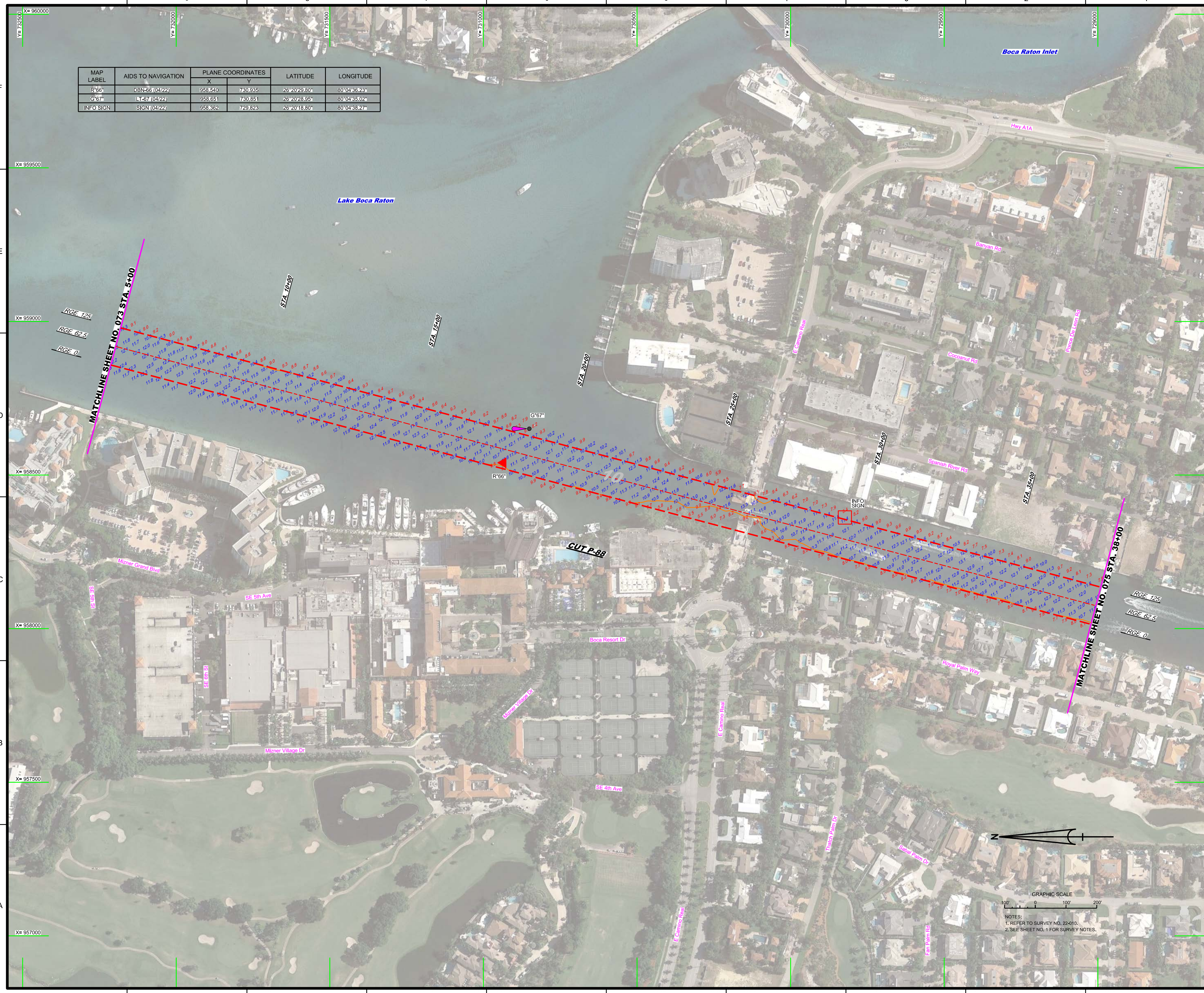
**HYDROGRAPHIC EXAM SURVEY FY22**  
**10-FOOT PROJECT**

STA. 5+00 THRU STA. 38+00 CUT P-88  
**PLAN**

Scale: AS SHOWN

Drawing no.  
**74**

SHEET 74 OF 76



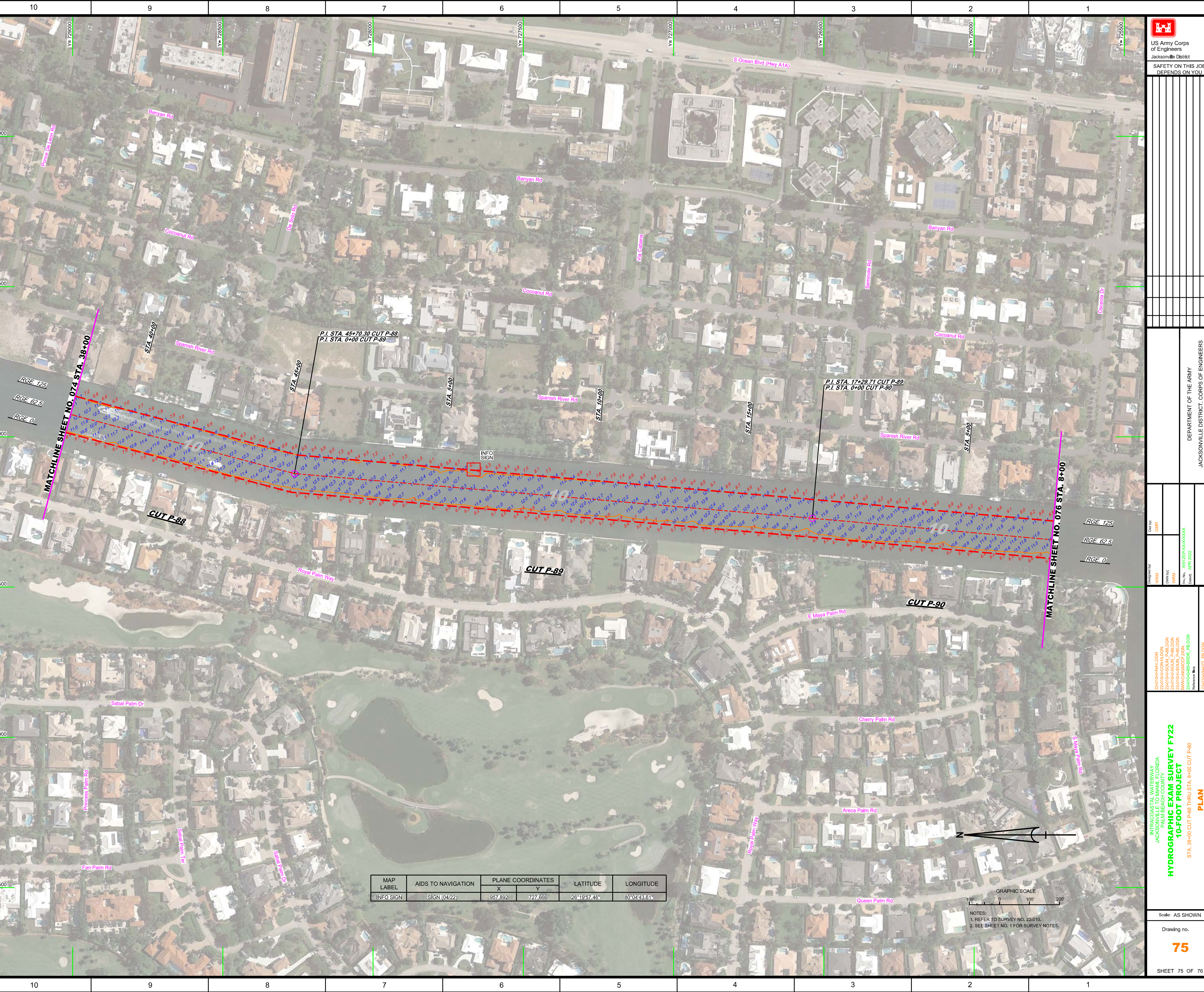
GRAPHIC SCALE  
100' 0 100' 200'


NOTES:  
1. REFER TO SURVEY NO. 22-010.  
2. SEE SHEET NO. 1 FOR SURVEY NOTES.



F  
E  
D  
C  
B  
A

X=959000  
X=958500  
X=958000  
X=957500  
X=957000  
X=956500





US Army Corps of Engineers  
Jacksonville District

SAFETY ON THIS JOB  
DEPENDS ON YOU

|  |   |
|--|---|
| <p>DESIGNED BY: WRM<br/>CHECKED BY: GHR<br/>DATE: APR 2022</p> <p>PROJECT: HYDROGRAPHIC EXAM SURVEY FY22<br/>10-FOOT PROJECT<br/>STA. 38+00 CUT P-88 THRU STA. 8+00 CUT P-90</p> <p>PLAN</p> | <p>DEPARTMENT OF THE ARMY<br/>JACKSONVILLE DISTRICT, CORPS OF ENGINEERS<br/>JACKSONVILLE, FLORIDA</p> <p>Scale: AS SHOWN</p> <p>Drawing no. <b>75</b></p> <p>SHEET 75 OF 76</p> |
|--|---|

| MAP LABEL | AIDS TO NAVIGATION | PLANE COORDINATES |         | LATITUDE     | LONGITUDE    |
|-----------|--------------------|-------------------|---------|--------------|--------------|
|           |                    | X                 | Y       |              |              |
| INFO SIGN | SIGN (04/22)       | 957.892           | 727.666 | 26°19'57.46" | 80°04'43.61" |

GRAPHIC SCALE  
100' 0 100' 200'

NOTES:  
1. REFER TO SURVEY NO. 22-010.  
2. SEE SHEET NO. 1 FOR SURVEY NOTES.

